



## Vacation Care

### Dudley Street

Monday 4<sup>th</sup> January – Thursday 28<sup>th</sup> January

**Daily Fee \$66.00 (6:30am - 6:00pm)**

Please ensure you have updated your details at MyGov for Vacation Care and you have accepted your enrolment.

For information on absent days please visit:

<https://www.humanservices.gov.au/individuals/services/centrelink/child-care-subsidy/how-manage-your-payment/if-your-child-absent-from-child-care>

Child/ren Name: \_\_\_\_\_

School Child Attends: \_\_\_\_\_

Parent/Carer Name: \_\_\_\_\_

Parent/Carer Signature: \_\_\_\_\_

Date: \_\_\_\_\_

**Cessnock Multipurpose Children's Centre uses the DEBIT SUCCESS fee payment system.**

Fees are direct debited from your account at the end of the week being Friday at 10am. Please check with your bank for processing times.

If you are experiencing a loss of employment or significantly reduced income

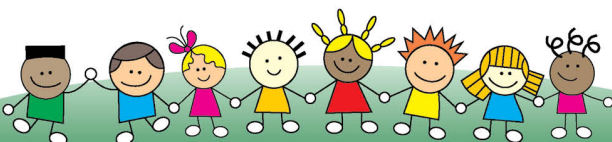
**ACCS (Temporary Financial Hardship)**

may be applicable if you still wish to send your children to Vacation Care.

If you'd like more information about ACCS please find below a useful link to information from the Australian Government Services Australia regarding "Temporary Financial Hardship" subsidy.

<https://www.servicesaustralia.gov.au/individuals/services/centrelink/additional-child-care-subsidy/who-can-get-it/temporary-financial-hardship-subsidy>

During Vacation Care, priority of access may be given to those children of families and friends who are part of our essential services.



**Educating and Caring for Children since 1963**

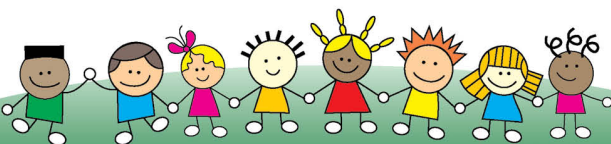
5 Dudley Street, Cessnock NSW 2325  
Ph: 02 4990 2687 Email: [admin@cmcc.nsw.edu.au](mailto:admin@cmcc.nsw.edu.au)  
ABN: 81 002 428 908

[www.cmcc.nsw.edu.au](http://www.cmcc.nsw.edu.au)



# Cessnock Multipurpose Children's Centre

	<b>Monday 4<sup>th</sup> January</b>	<b>Tuesday 5<sup>th</sup> January</b>	<b>Wednesday 6<sup>th</sup> January</b>	<b>Thursday 7<sup>th</sup> January</b>	<b>Friday 8<sup>th</sup> January</b>
	<b>Vacation Care</b>	<b>Vacation Care</b>	<b>Vacation Care</b>	<b>Compulsory Incursion</b> Bop 'Til You Drop Slime & Disco Party \$10.00 each	<b>Excursion</b> Poppet Head Park <input type="checkbox"/> \$5.00 each
<b>Hours Attending</b> Please indicate arrival and departure times	(e.g. 8.30am - 5.00pm)	(e.g. 8.30am - 5.00pm)	(e.g. 8.30am - 5.00pm)	(e.g. 8.30am - 5.00pm)	(e.g. 8.30am - 5.00pm)
	<b>Monday 11<sup>th</sup> January</b>	<b>Tuesday 12<sup>th</sup> January</b>	<b>Wednesday 13<sup>th</sup> January</b>	<b>Thursday 14<sup>th</sup> January</b>	<b>Friday 15<sup>th</sup> January</b>
	<b>Compulsory Incursion</b> Healthy Cooking & Lunch Box Snacks \$5.00	<b>Compulsory Incursion</b> RAWArt Workshop - Arty Aussie Animals \$10.00	<b>Excursion</b> No Limit Sports Day - Traditional Indigenous Games <input type="checkbox"/> \$10.00	<b>Vacation Care</b>	<b>Vacation Care</b>
<b>Hours Attending</b> Please indicate arrival and departure times	(e.g. 8.30am - 5.00pm)	(e.g. 8.30am - 5.00pm)	(e.g. 8.30am - 5.00pm)	(e.g. 8.30am - 5.00pm)	(e.g. 8.30am - 5.00pm)
	<b>Monday 18<sup>th</sup> January</b>	<b>Tuesday 19<sup>th</sup> January</b>	<b>Wednesday 20<sup>th</sup> January</b>	<b>Thursday 21<sup>st</sup> January</b>	<b>Friday 22<sup>nd</sup> January</b>
	<b>Vacation Care</b>	<b>Excursion</b> No Limit Sports Day - Water Sports <input type="checkbox"/> \$10.00	<b>Vacation Care</b>	<b>Excursion</b> Gruffalo's Child at CPAC <input type="checkbox"/> \$15.00	<b>Vacation Care</b>
<b>Hours Attending</b> Please indicate arrival and departure times	(e.g. 8.30am - 5.00pm)	(e.g. 8.30am - 5.00pm)	(e.g. 8.30am - 5.00pm)	(e.g. 8.30am - 5.00pm)	(e.g. 8.30am - 5.00pm)
	<b>Monday 25<sup>th</sup> January</b>	<b>Tuesday 26<sup>th</sup> January</b>	<b>Wednesday 27<sup>th</sup> January</b>	<b>Thursday 28<sup>th</sup> January</b>	<b>Friday 29<sup>th</sup> January</b>
	<b>Compulsory Incursion</b> JD's Magic Workshop \$10.00	<b>PUBLIC HOLIDAY</b>	<b>Staff Development Day at your OOSH Service</b>	<b>Staff Development Day at your OOSH Service</b>	<b>OOSH Regular Services</b>
<b>Hours Attending</b> Please indicate arrival and departure times	(e.g. 8.30am - 5.00pm)	<b>CLOSED Australia Day</b>	(e.g. 8.30am - 5.00pm)	(e.g. 8.30am - 5.00pm)	<b>Before and After School Care</b>



**Educating and Caring for Children since 1963**

5 Dudley Street, Cessnock NSW 2325  
Ph: 02 4990 2687 Email: admin@cmcc.nsw.edu.au  
ABN: 81 002 428 908

[www.cmcc.nsw.edu.au](http://www.cmcc.nsw.edu.au)